



YOUR COMMUNITY, YOUR HOME!

Floorplans

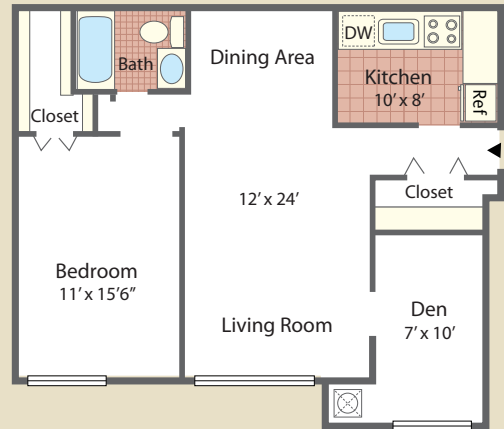
One Bedroom

714 Square Feet



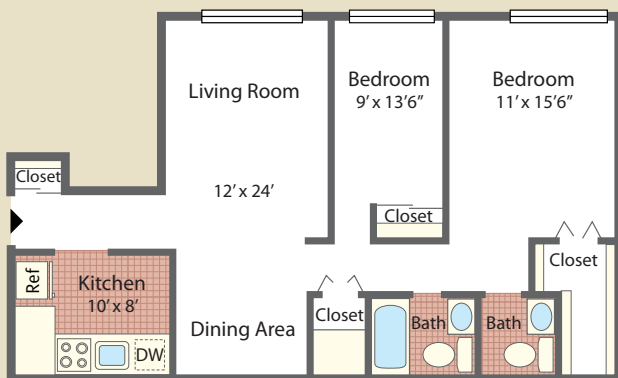
One Bedroom With Den

813 Square Feet



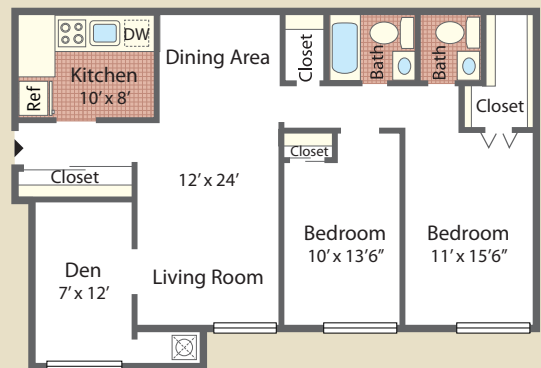
Two Bedroom

917 Square Feet



Two Bedroom with Den

1,088 Square Feet



Floor plans not to scale. Details vary from residence to residence and are not necessarily built exactly as indicated above.

Heatherwood Apartments

Situated in the heart of Northeast Philadelphia, Heatherwood Apartments offers comfortable apartment homes, responsive service, a care-free lifestyle and much more. With four spacious floorplans, you'll be sure to find the perfect home for your lifestyle. Heatherwood's convenient location provides easy access to several major thoroughfares, including Route 1, Pennsylvania Turnpike, and I-95. Residents enjoy the close proximity to a variety of recreational activities, shopping, dining, schools and public transportation – all within walking distance from our wonderful community.

Apartment Features

- Studio, 1, 2 and 3 bedroom apartments
- Fully-equipped kitchens with dishwasher and disposal
- Separate dining areas
- Optional study/den available
- Individually controlled gas heat
- Central air-conditioning
- Wall-to-wall carpeting
- Intercom access system
- Internet, phone, cable ready
- Window treatments provided
- Neutral interior décor

Community Amenities

- Laundry facilities in each building
- Off-street parking
- Beautiful landscaped grounds
- Close to public transportation, schools, shopping, recreation and entertainment
- 24-hour emergency maintenance
- Professional on-site management





Directions

From Roosevelt Boulevard (Route 1) North: Make a left onto Strahle Street. Follow to Bustleton Avenue and make a right onto Bustleton. Follow approximately one mile. Heatherwood entrance is on the left.

From Roosevelt Boulevard (Route 1) South: Travel to Grant Avenue. Make a right and follow Grant Avenue to Bustleton and turn left. Just past the second traffic light, Heatherwood entrance is on the right.



Heatherwood Apartments

9200 Bustleton Avenue • Philadelphia, PA 19115

(p) 215.698.1467 • (f) 215.671.9984

heatherwood@altmanco.com



WWW.ALTMANCO.COM