



  
**EMERALD RIDGE**  
APARTMENTS

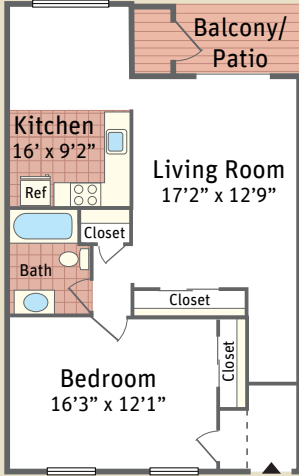


YOUR COMMUNITY, YOUR HOME!

# Floorplans

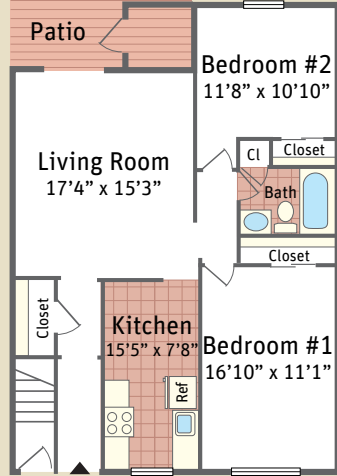
## One Bedroom

789 Square Feet



## Two Bedroom

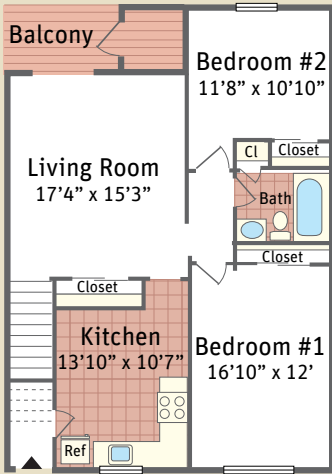
1117 Square Feet



First Floor

## Two Bedroom

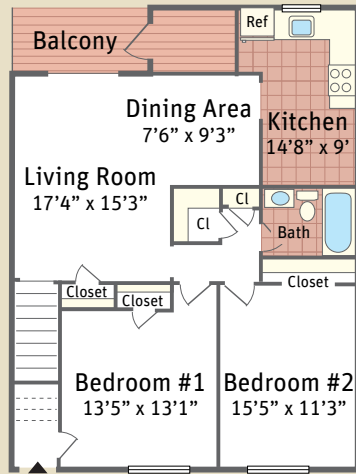
1117 Square Feet



Second Floor

## Two Bedroom

1176 Square Feet



Second Floor

Floorplans not to scale. Details vary from residence to residence and are not necessarily built exactly as indicated above.

# Emerald Ridge Apartments

Exciting changes are happening at this wonderful apartment community! Emerald Ridge offers newly renovated one and two bedroom apartment homes that are comfortable and spacious, along with a host of community amenities. Our professional on-site management team is friendly and provides responsive service, ensuring residents enjoy a carefree lifestyle.

## Apartment Features

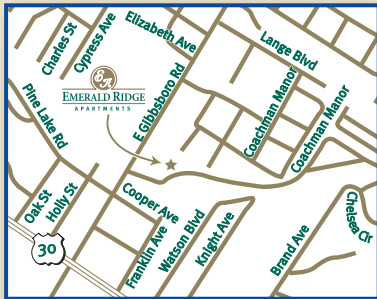
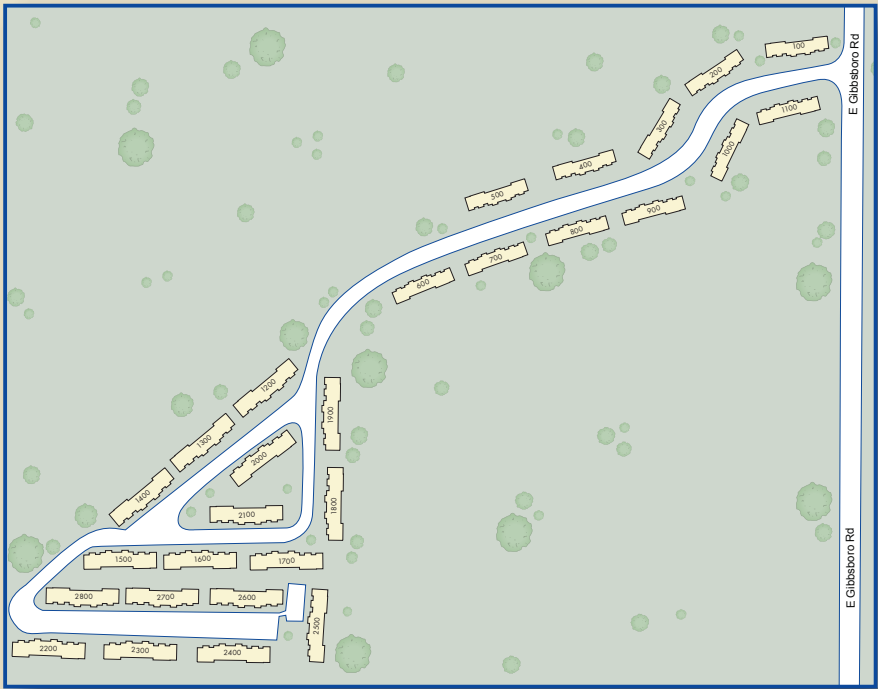
- Spacious 1 & 2 bedroom apartments
- Dens in select apartments
- Fully-equipped kitchens with dishwasher
- Heat & hot water included in rent
- Wall-to-wall carpeting
- Abundant closet space
- Private patio or balcony
- Central air-conditioning
- Cable ready

## Community Amenities

- On-site laundry
- Community playground
- Convenient to Route 30
- Close to public transportation, shopping & restaurants
- Lindenwold School District
- 24-hour emergency maintenance
- Professional on-site management

Ideally located, Emerald Ridge is near plenty of retail, just minutes from Philadelphia, and less than an hour to Atlantic City. Residents have easy access to various public transportation, including the Hi-Speed line, Routes 42 and I-295 and the New Jersey Turnpike. A combination of convenience and charm, the new Emerald Ridge is the perfect place to call home.





## Directions

**From Route 30 (Walt Whitman):** Exit I-295 North. East on Route 561 to Voorhees. 3 miles to Gibbsboro Road. Right for 5.6 miles. Emerald Ridge Apartments is on the left.



### Emerald Ridge Apartments

101 E. Gibbsboro Road - 1105 • Lindenwold, NJ 08021

(p) 856.784.0747 • (f) 856.784.5356

emerald@altmanco.com



WWW.ALTMANCO.COM