




BIRCHWOOD HILL
APARTMENTS

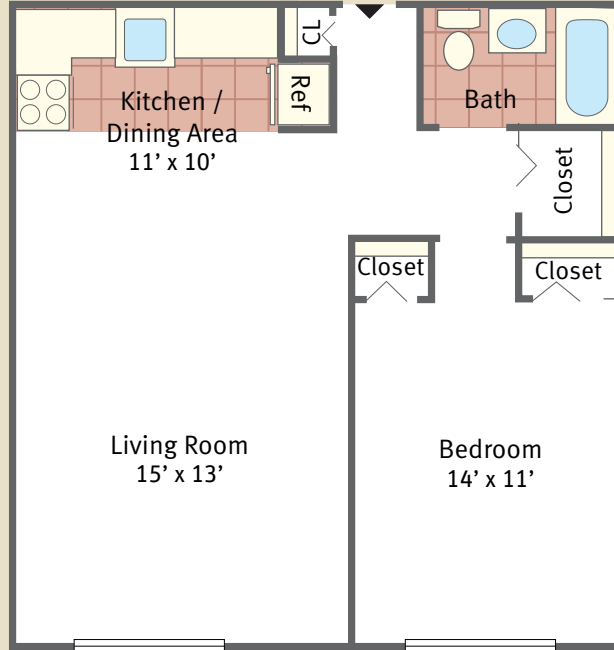


YOUR COMMUNITY, YOUR HOME!

Floorplans

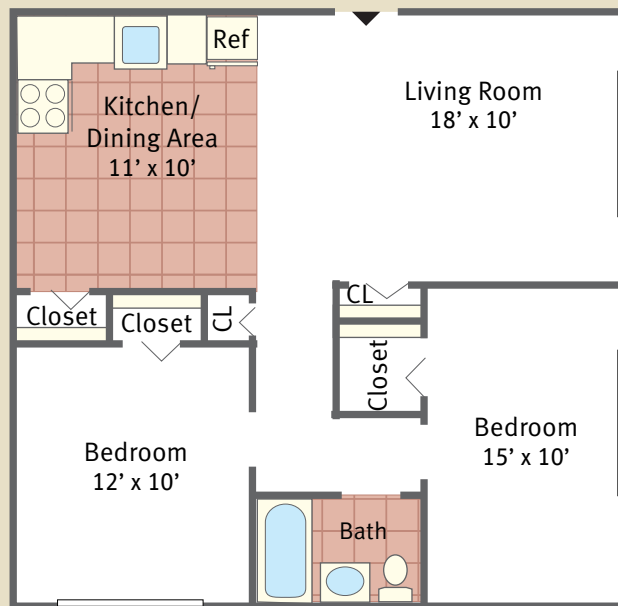
One Bedroom

459 Square Feet



Two Bedroom

560 Square Feet



Floorplans not to scale. Details vary from residence to residence and are not necessarily built exactly as indicated above.

Birchwood Hill Apartments

Nestled in the gracious, tree-lined neighborhood of historic Germantown. Our spacious one and two bedroom apartments offer a comfortable and affordable lifestyle just minutes from Center City, Philadelphia that is complemented by quality service and a caring staff. Quality starts with our staff and community and continues inside each apartment home.

Apartment Features

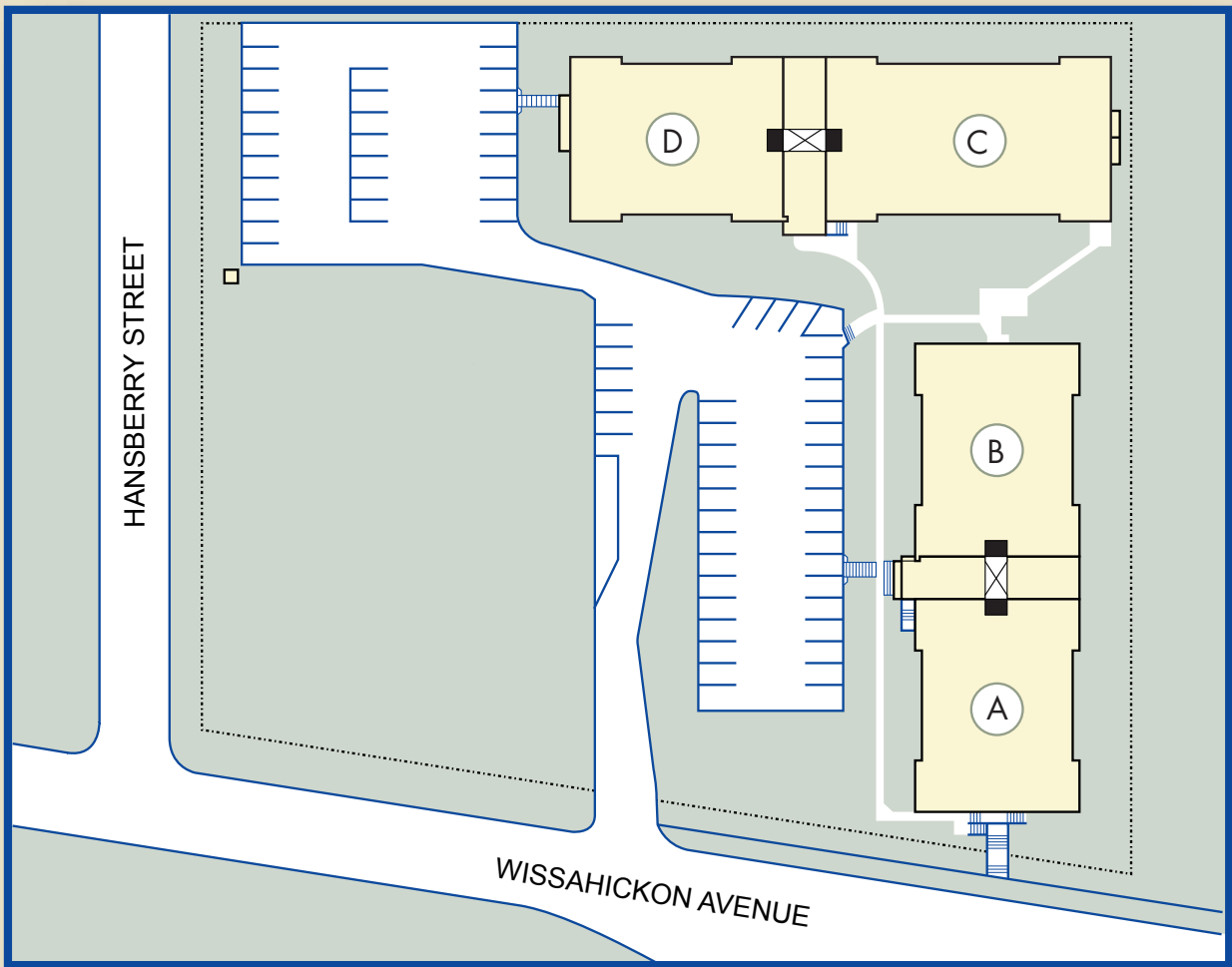
- Spacious 1 & 2 bedroom apartments
- Wall-to-wall carpeting
- Air-conditioning
- Cable ready
- Spacious closets
- Mini-blinds throughout
- Kitchens with garbage disposal
- Intercom access system

Community Amenities

- Private off-street parking
- Laundry facilities on-site
- Public transportation at your door
- Cats welcome; restrictions apply
- 24-hour emergency maintenance
- Professional on-site management

Birchwood Hill's convenient location offers easy access to Center City, the Schuylkill Expressway (I-76), and I-95. In addition, public transportation, shopping, dining and schools are all within walking distance.





Directions

From I-76: Take US-1 North (Roosevelt Expressway). Take the Henry Avenue Exit and bear right on to West Roberts Avenue. Turn right on to Wissahickon Avenue. Birchwood Hill Apartments will be on your right just past West Manheim Street.



Birchwood Hill Apartments

5115 Wissahickon Avenue • Philadelphia, PA 19144

(p) 215.849.6186 • (f) 215.849.8955

birchwoodhill@altmanco.com



WWW.ALTMANCO.COM